

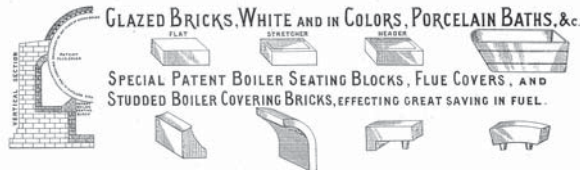
## History of Firebrick Making

Firebricks or refractories were first manufactured from clay over 250 years ago. The Harris & Pearson Company started to make refractories on this site in Brettell Lane in 1852.

This was an ideal place to start a firebrick business. As well as clay all the necessary raw materials including coal, iron, lime and sand were extracted or mined locally. Transport links were also good including the Stourbridge Canal, the Great Western Railway and the Black Country Tram Network.

## The Use of Firebricks (Refractories)

Refractories are special bricks and blocks that can withstand high temperatures. Many manufacturing processes involve heating materials and refractories are used to line the containers in which these processes are carried out.



Part of a catalogue which describes the products produced by the Harris & Pearson Company in around 1883.

## The Workers

In the 1800s many factory workers were children. They worked long hours in dangerous conditions and were often harshly treated by their supervisors.



A factory worker during the Victorian period

It is therefore possible that children worked for the Harris and Pearson Company although no evidence has been found of children being employed there.



The works outing to Westonsuper-Mare on 4th July 1925

Many former employees of the Harris and Pearson Company have happy memories of the times that they worked there.

What would you like to find out about the Harris and Pearson brickworks ?

You can find out more about the history of the Company and the people who used to work there from the Harris and Pearson web site ([www.harrsandpearson.info](http://www.harrsandpearson.info)).

# Harris & Pearson Office Building

Brettell Lane  
Brierley Hill

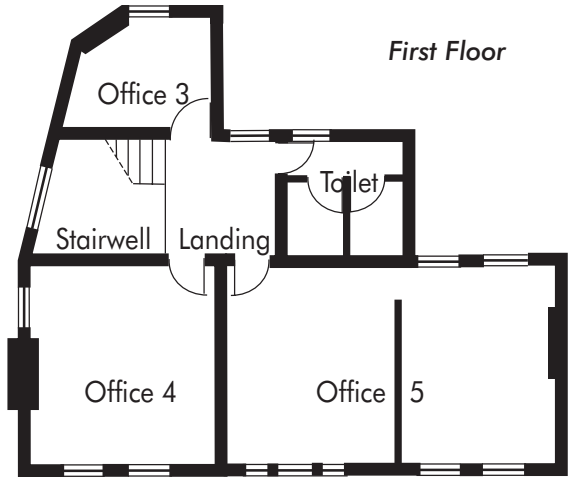
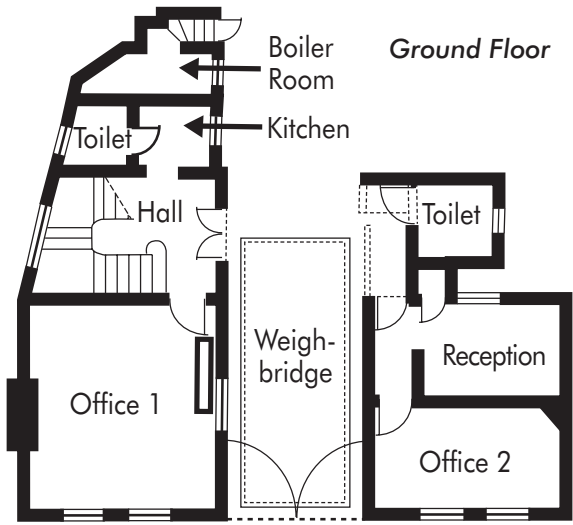


Built: 1888

Used as offices until 1990

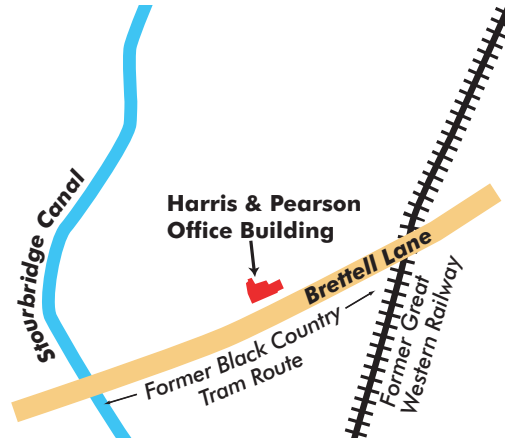
Restored and used as offices: 2005

Can you think of local industries that would have used firebricks?



What materials were used in the construction of this building?

Why do you think it was built here?



What has happened to the building? Why?

What do you think the building was used for?

Who do you think worked here?

What do you think it is used for now?

